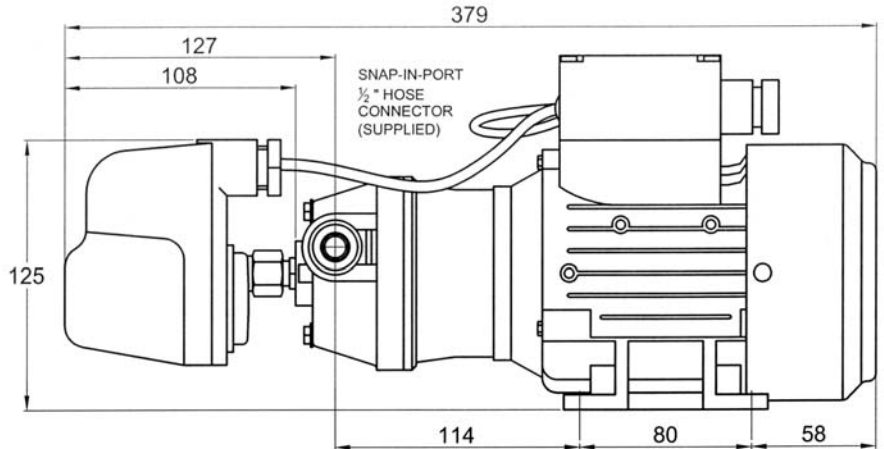
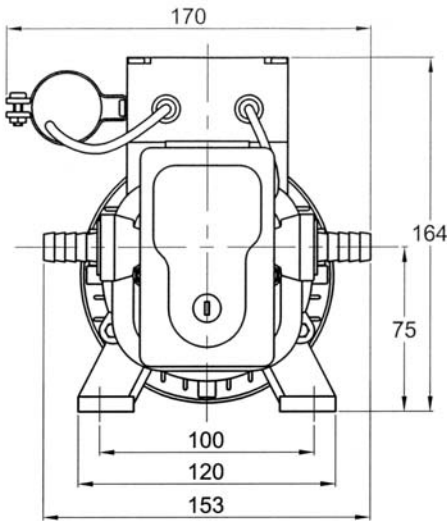


OPTIONAL EXTRA'S

Pressure Switch Control of CW474

The **CW474** pump is available fitted with an industrial pressure switch, capable of being adjusted over a cut-out pressure range of 1 bar (15 psi) to 3 bar (45 psi). This pressure switch is hose protected to IP55 spec. in line with the motor specification on the **CW474** pump



OPTIONAL EXTRA SNAP-IN-PORT ADAPTORS AND INLET STRAINERS ARE AVAILABLE. ASK FOR A DATA SHEET

Strainers

A surprising amount of debris can find its way into even the cleanest of systems. Keep out solids large enough to interfere with your pump by fitting a strainer in the inlet line to the pump.

We have a range of pug-in and in line strainers designed to match your CW474 pump. Please ask for details



Snap in Port Fittings

Fitting	Port seal O-ring
Straight 1/2" BSP external 1/2" hose 3/4" hose	EPDM Viton
90° Fitting 1/2" BSP external 1/2" hose 3/4" hose	EPDM Viton

